



George Brailsford

42 Wheeldon Avenue

When George enlisted in August 1916, aged 25, he was living at 5 Redshaw Street. His occupation on his signing-up papers was given as a Painter (house painter). He was assigned to the Army Service Corps (Mechanised Transport), but like many men there was a delay between being called up and mobilised for active service. Before he was mobilised he married Edith Holt at Kedleston Street Bourne Primitive Methodist Chapel, on 18 October 1916. One of seven children, Edith lived with her family at 42 Wheeldon Avenue and in the 1911 census her occupation was listed as “dressmaker”.

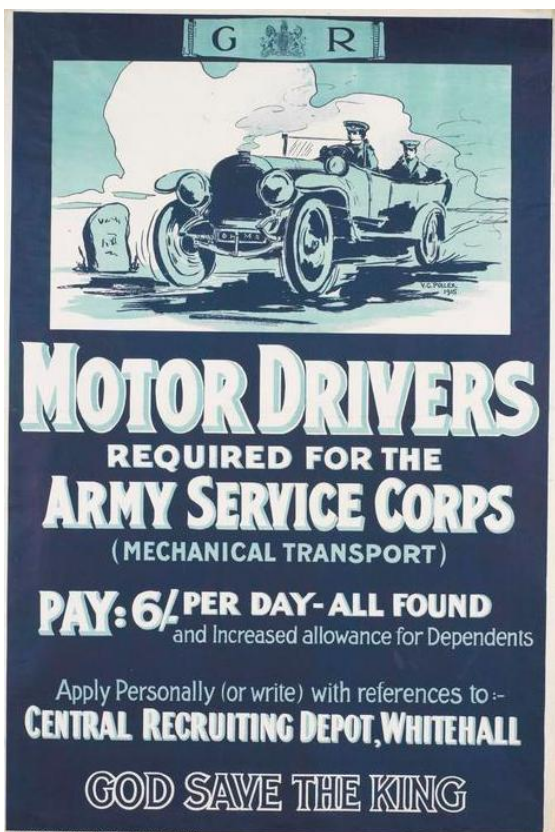
George was mobilised in March 1917 and was based at Grove Park, near London – a large distribution centre for army supplies. He appears not to have served overseas. His military records state that he served as a heavy ASC Driver and instructor.

On 21 January 1918 George was elevated to the rank of Lance Corporal, but following a disciplinary hearing just two months later on 18 March 1918 he reverted to the permanent rank of Private, following an incident whilst on active service:

“Disobeying standing orders in that he entered a coffee shop at 3.10 pm whilst in charge of a lorry no 20/A2”

He was demobilised from military duty on 19 March 1919 and returned to Derby. He was registered as living at 42 Wheeldon Avenue during the war – presumably Edith continued to live there while he was away on active service. Shortly after he was demobilised they moved on elsewhere to take up their married life together

We know they had one son, John, born in 1926 in Belper, but have not been able to trace any further family. George died in October 1953, living on Robincroft Road, Allestree at the time of his death. His estate of over £35,000 was left to Edith, his widow, who died in March 1969.



Recruiting poster for the Army Service Corps (Motorised Transport)
© Imperial War Museum (Art.IWM PST 13484)